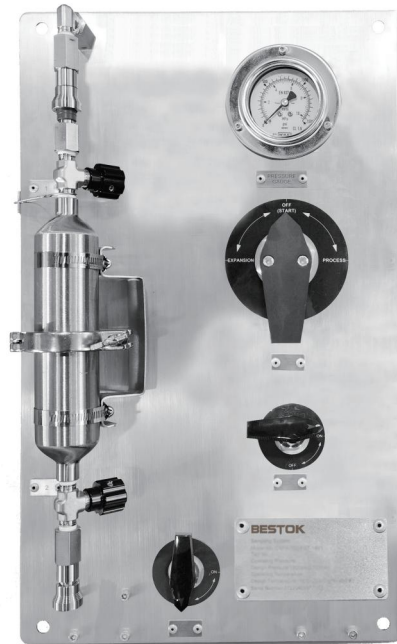


# CLOSED-LOOP SAMPLING SYSTEM

- Two kinds of optional sampling containers: Bottles and Cylinders.
- System main body material: 316 SS, 316L SS, 304L SS etc (Can be customized)
- Connection: 1/4" Tube fitting, 1/2" NPT Thread or NPS 1/2" Flange (Can be customized)
- Working temperature and pressure range: can be customized according to customer requirements
- Applicable working conditions: High temperature, high pressure, high viscosity, strong corrosive, strong toxicity and hazardous liquid bane to the environment
- Various mounting way

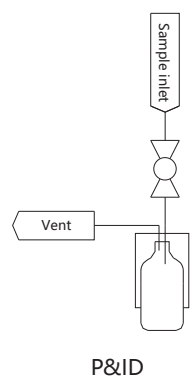


## SL- Bottle Configuration Sampling Systems for Liquids

### A Series

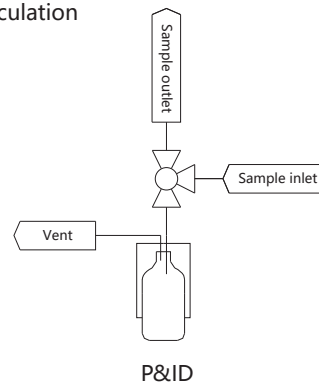
#### SLA1-On-off Configuration

- Sampling directly from process or system, low pressure application



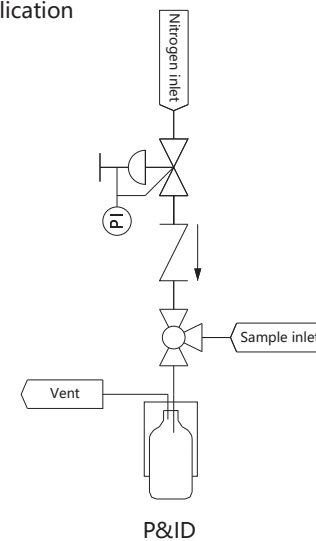
#### SLA2-Circulation Configuration

- Sampling directly from process or system, low pressure application
- Sample circulation



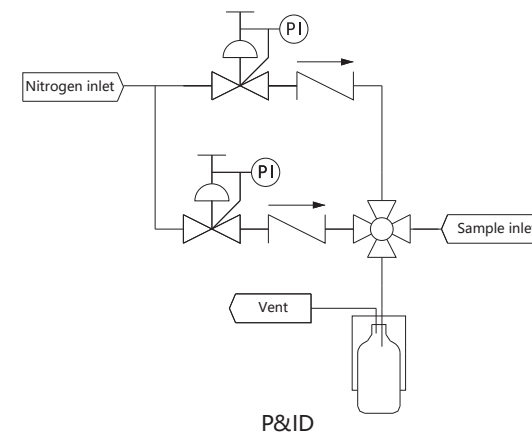
#### SLA3-Back Flow Configuration

- Sampling directly from process or system, low pressure application
- Back flow



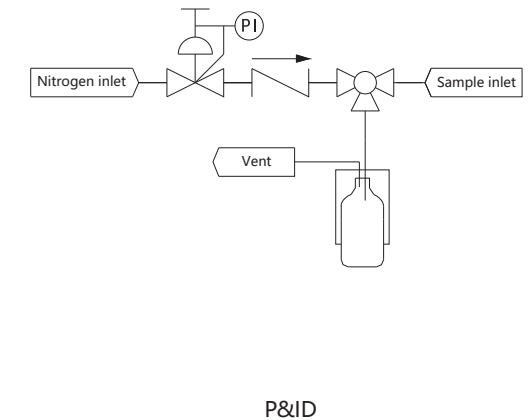
#### SLA5-Back Flow, Air Replaced and System Purge Configuration

- Sampling directly from process or system, low pressure application
- System purge
- Back flow and bottle air replaced



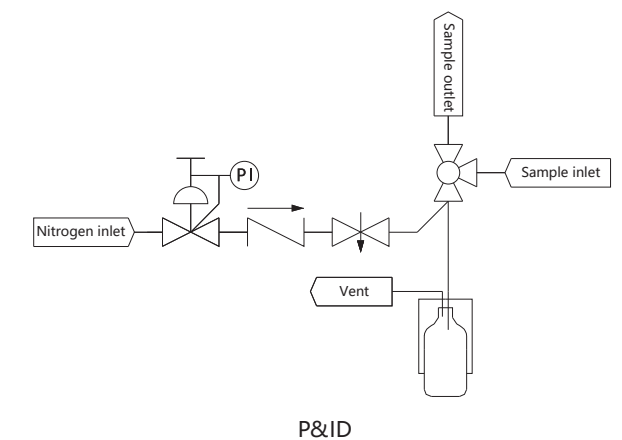
#### SLA4-Air Replaced and System Purge Configuration

- Sampling directly from process or system, low pressure application
- System purge
- Bottle air replaced



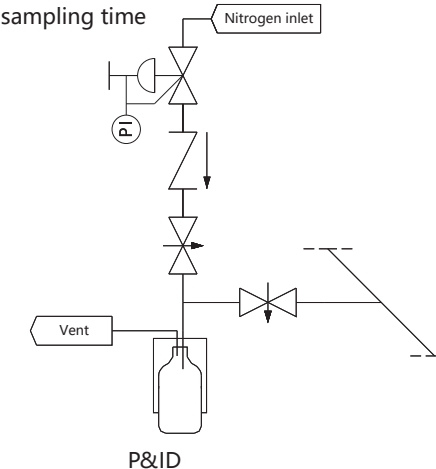
#### SLA6-Air Replaced, Circulation and Needle Purge Configuration

- Sampling directly from process or system, low pressure application
- Needle purge
- Sample circulation and bottle air replaced



#### SLA7 - In-line and Needle Purge Type

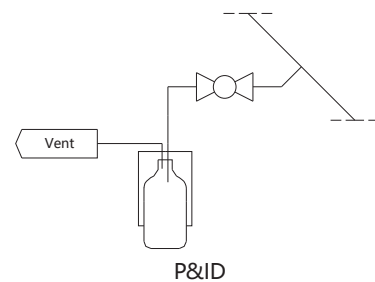
- Sampling from low pressure devices or process lines: 0-145 psig(0-10 bar)
- In-line sampling valve to save sampling time
- Needle purge



## B Series

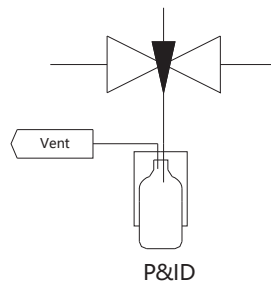
### SLB1-Sample circulation and bottle air replaced

- Applicable for sampling from process and container
- Sampling directly from process and container



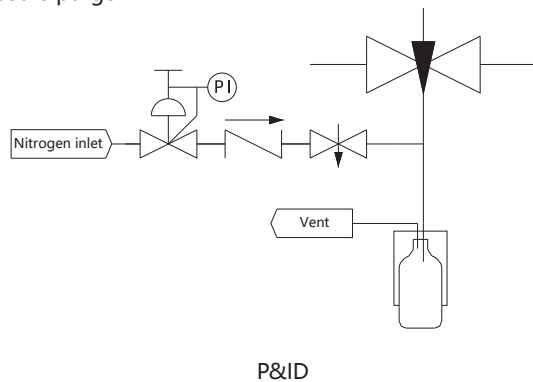
### SLB2--In Line and Circulation Configuration

- In line sampling
- Sample circulation
- Suitable for viscous liquid or liquid with few solid particles



### SLB3--Purge Configuration In Line, Air Replaced and Needle

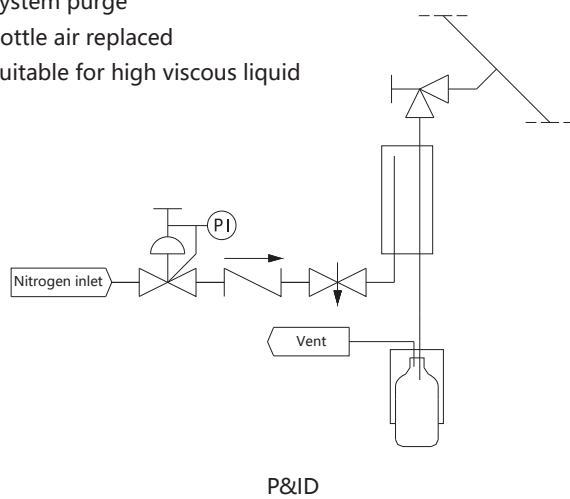
- In line sampling
- Bottle air replaced
- Suitable for viscous liquid or liquid with few solid particles
- Needle purge



## C Series

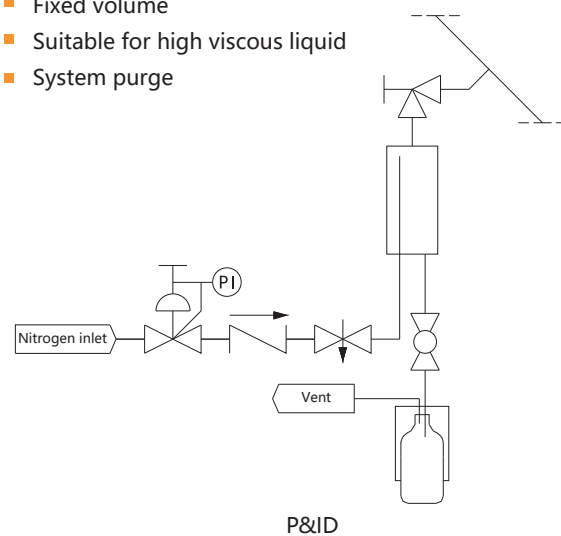
### SLC1-Air Replaced and System Purge Configuration

- Sampling directly from process or system
- System purge
- Bottle air replaced
- Suitable for high viscous liquid



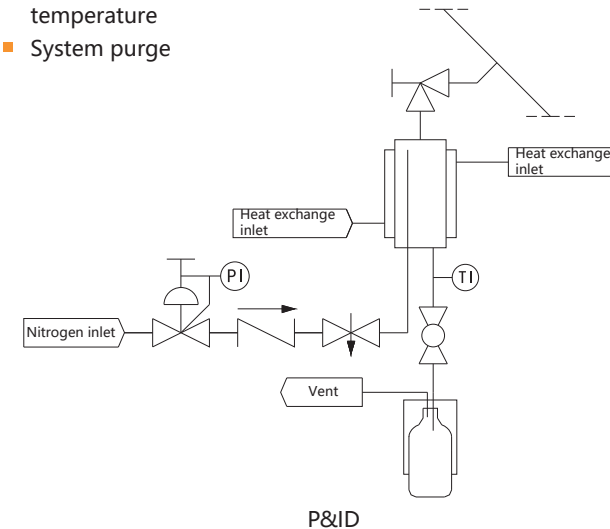
### SLC2--Fixed Volume, Air Replaced and System Purge Configuration

- Sampling directly from process or system
- Bottle air replaced
- Fixed volume
- Suitable for high viscous liquid
- System purge



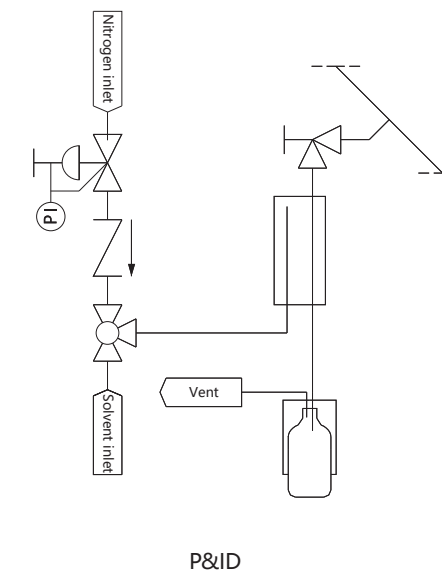
### SLC3-Heating/cooling, Fixed Volume, Air Replaced and System Purge Configuration

- Sampling directly from process or system
- Bottle air replaced
- Fixed volume
- Suitable for high viscous liquid
- Heating/Cooling jacket ensures sampling at the required temperature
- System purge



### SLC4-Solvent Purge, Air Replaced and System Purge Configuration

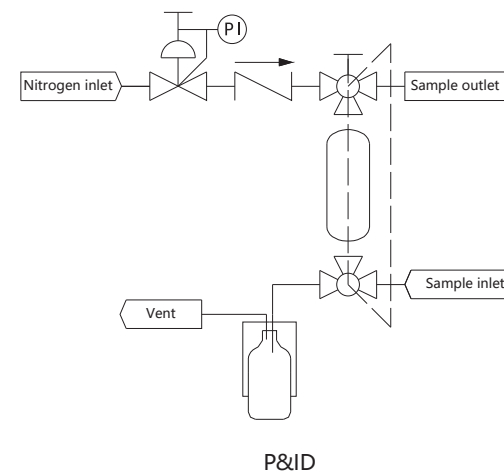
- Sampling directly from process or system
- Bottle air replaced and solvent purge
- Suitable for high viscous liquid
- Solvent purge and system purge function



## D Series

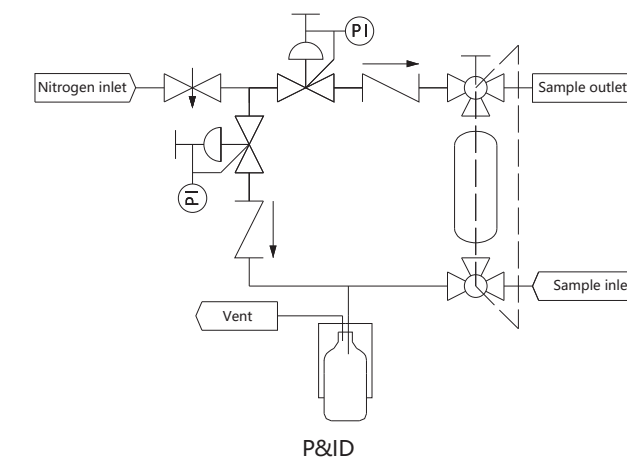
### SLD1-Fixed Volume, Circulation and System Purge Configuration

- Sampling directly from process or system
- Fixed volume
- Sample circulation
- System purge
- Linkage ball valve design, easy operation



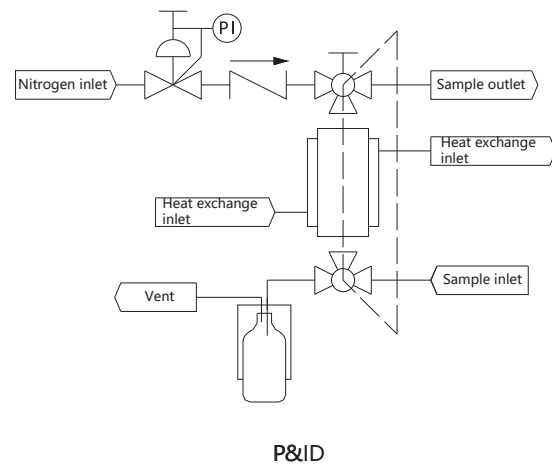
### SLD2-Fixed Volume, Circulation, Air Replaced and System Purge Configuration

- Sampling directly from process or system
- Fixed volume
- Bottle air replaced
- System purge
- Linkage ball valve design, easy operation
- Sample circulation



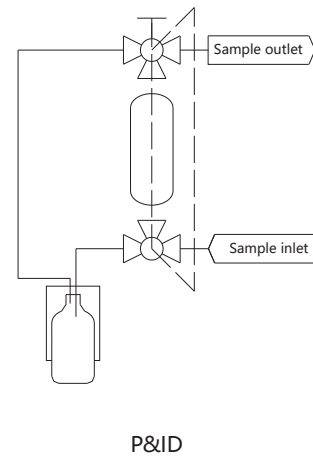
### SLD3-Heating/Cooling, Circulation, Fixed Heating/Cooling, Circulation, Fixed

- Sampling directly from process or system
- Fixed volume
- Sample circulation
- System purge
- Heating/Cooling jacket ensures sampling at the required temperature
- Linkage ball valve design, easy operation



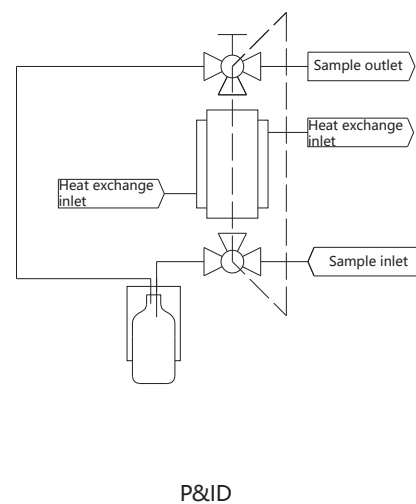
### SLD4 - Sampling by Gravity Type

- Sampling from medium or high pressure devices or process lines
- Fixed volume sampling
- System purge
- Sampling by gravity without Nitrogen purge
- Easy operation with a single handle by linkage valve



### SLD5- Sampling by Gravity Type with Heating/Cooling Jacket

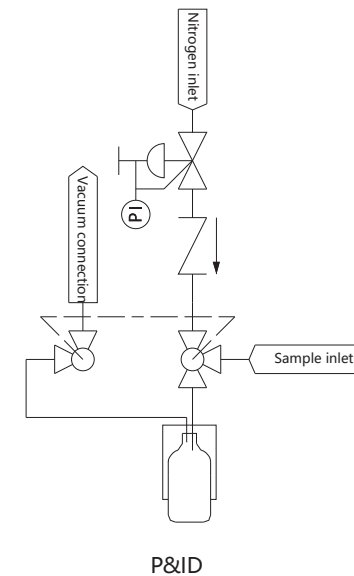
- Sampling from medium or high pressure devices or process lines
- Fixed volume sampling
- System purge
- Sampling by gravity without Nitrogen purge
- Heating/cooling jacket to ensure sampling within a certain range of temperature
- Easy operation with a single handle by linkage valve



### E Series

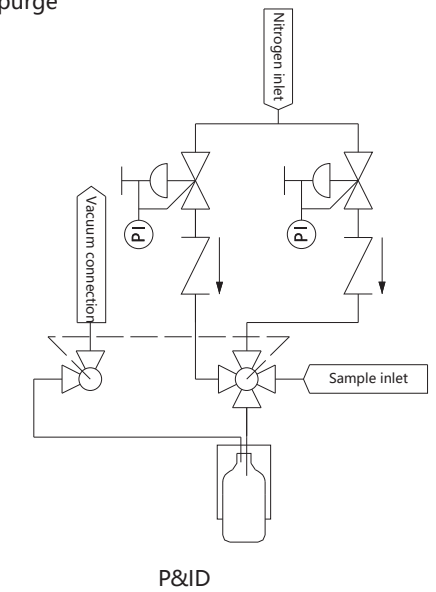
#### SLE1-Back Flow and Vacuum Configuration

- Sampling directly from process or system
- Applicable for zero-pressure or vacuum process
- Back flow
- Linkage ball valve design, easy operation



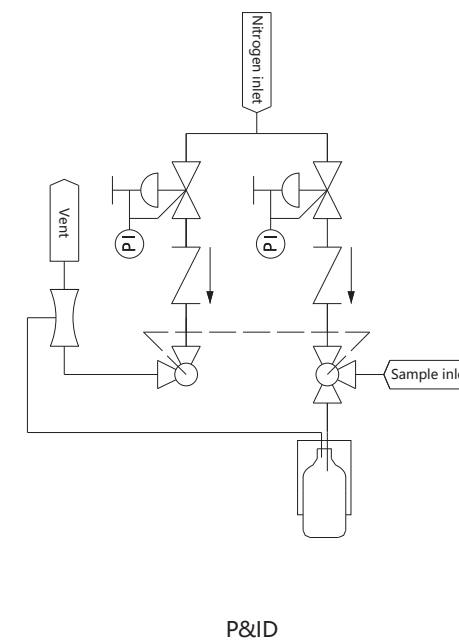
#### SLE2-Back Flow, Air Replaced, Vacuum and System Purge Configuration

- Sampling directly from process or system
- Applicable for zero-pressure or vacuum process
- Back flow and bottle air replaced
- Linkage ball valve design, easy operation
- System purge



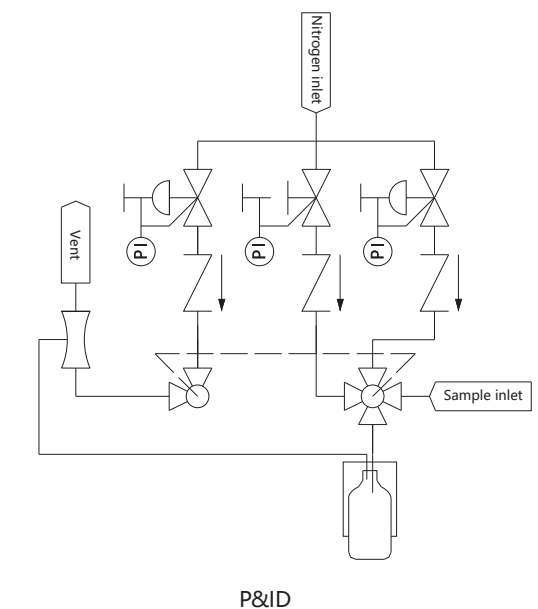
#### SLE3-Back Flow and Venturi Configuration

- Sampling directly from process or system
- Applicable for zero-pressure or vacuum process
- Back flow
- Linkage ball valve design, easy operation



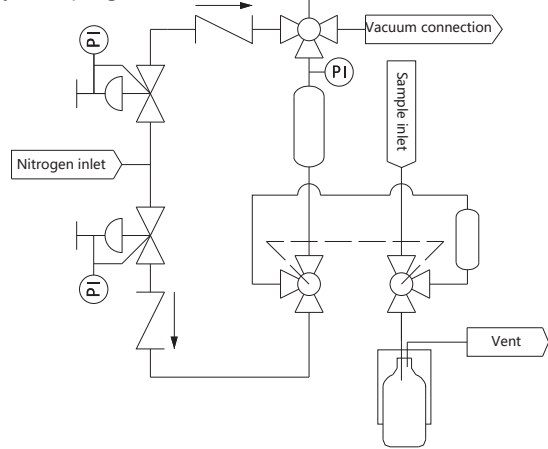
#### SLE4-Back Flow, Air Replaced, Venturi and System Purge Configuration

- Sampling directly from process or system
- Applicable for zero-pressure or vacuum process
- Back flow and bottle air replaced
- Linkage ball valve design, easy operation
- System purge



### SL5E-Vacuum, Overflow, Fixed Volume, Back Flow and System Purge Configuration

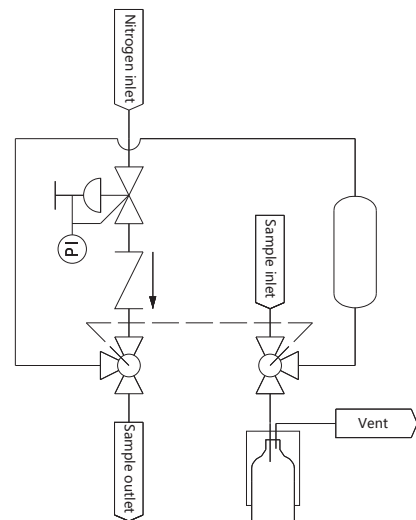
- Sampling directly from process or system
- Applicable for zero-pressure or vacuum process
- Fixed volume
- Back flow and overflow
- Linkage ball valve design, easy operation
- System purge



P&ID

### SLE6 - Fixed Volume Type

- Sampling from medium or high pressure devices or process lines
- Fixed volume sampling
- System purge and needle purge
- Easy operation with a single handle by linkage valve

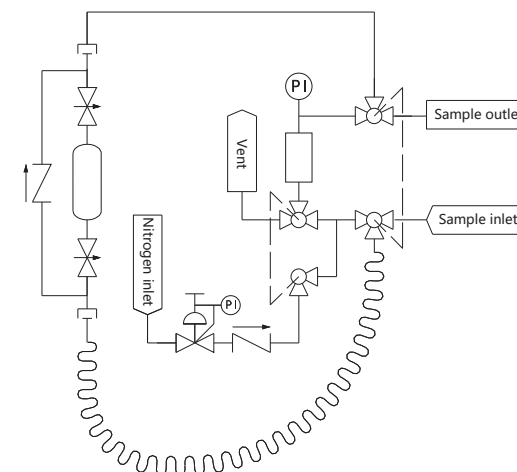


P&ID

## E Series

### CLF3-Expansion Chamber, Bypass and System Purge Configuration

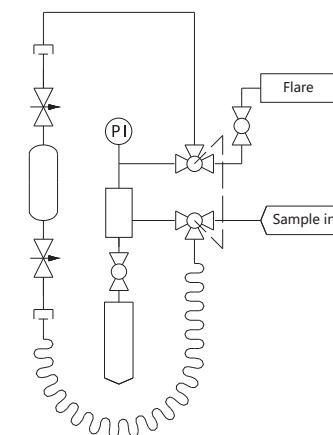
- Sampling directly from process or system
- Sample circulation and system purge
- Equipped with pressure relief system, safer for sampling
- Linkage ball valve design, easy operation



P&ID

### CLF4-Expansion Chamber and Outlet to Flare Configuration

- Sampling directly from process or system
- Applicable for sampling from process or system without process out connection
- Equipped with pressure relief system, safer for sampling
- Linkage ball valve design, easy operation



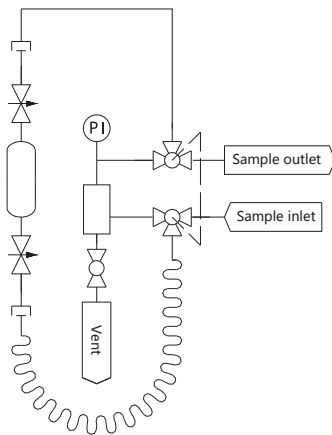
P&ID

## CL- Configuration Sampling System

### F Series

#### CLF1-Expansion Chamber Configuration

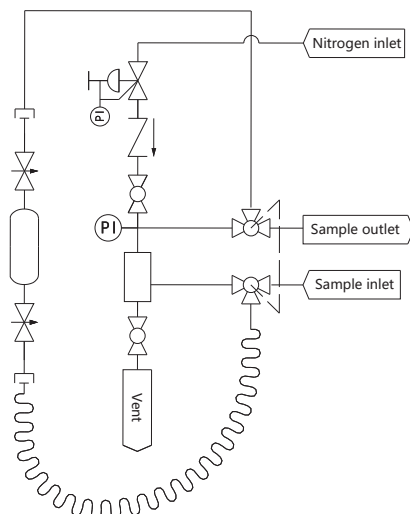
- Sampling directly from process or system
- Sample circularion
- Equipped with pressure relief system,safer for sampling
- Linkage ball valve design, easy operation



P&ID

#### CLF2-Expansion Chamber Purge

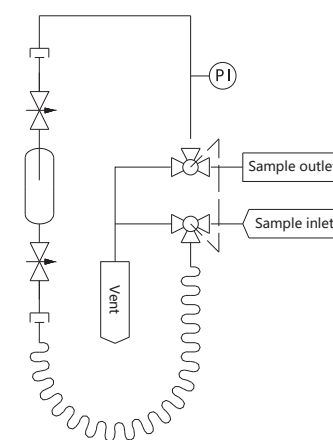
- Sampling directly from process or system
- Sample circularion and expansion chamber purge
- Equipped with pressure relief system, safer for sampling
- Linkage ball valve design, easy operation



P&ID

#### CLF5-Outage Tube Configuration

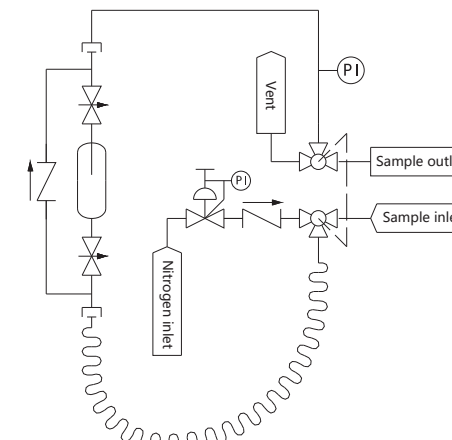
- Sampling directly from process or system
- Sample circularion
- Outage tube within cylinder keep the cylinder safe
- Linkage ball valve design, easy operation



P&ID

#### CLF6-Outage Tube, Bypass and System Purge Configuration

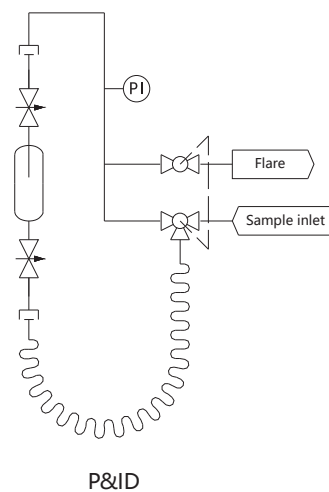
- Sampling directly from process or system
- Sample circularion and system purge
- Outage tube within cylinder keep the cylinder safe
- Linkage ball valve design, easy operation



P&ID

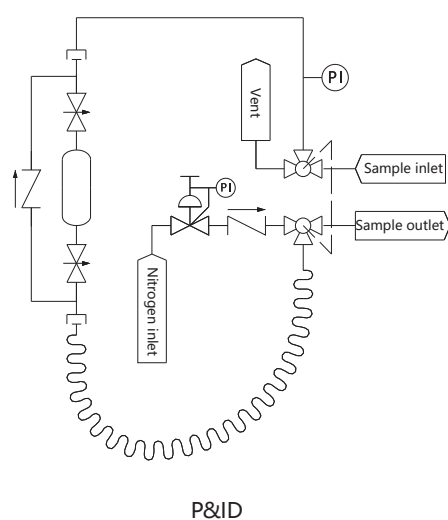
### CLF7-Outage Tube and Outlet to Flare Configuration

- Sampling directly from process or system
- Applicable for sampling from process or system without process out connection
- Outage tube within cylinder keep the cylinder safe
- Linkage ball valve design, easy operation



### CGG9-Bypass and System Purge Configuration

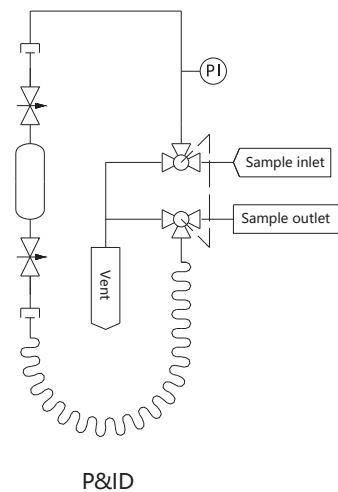
- Sampling directly from process or system
- Sample circulation and system purge
- Linkage ball valve design, easy operation



### CG-Gas Sampling

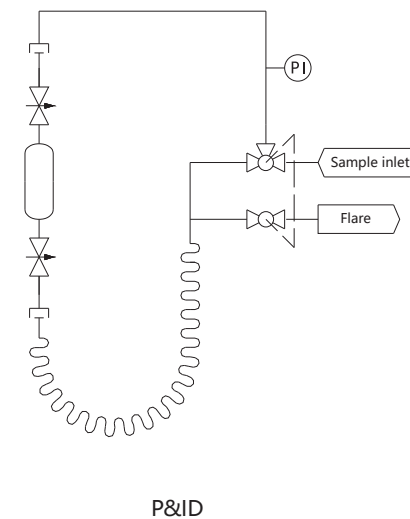
#### CGG8-Circulation Configuration

- Sampling directly from process or system
- Sample circulation
- Linkage ball valve design, easy operation



#### CGG7-Outlet to Flare Configuration

- Sampling directly from process or system
- Applicable for sampling from process or system without process out connection
- Linkage ball valve design, easy operation



## TUBE AND PIPES



### MP Series

- ◆ Materials: stainless steel, duplex stainless steel or nickel-based alloy
- ◆ Sizes: 1/16" to 2" and 2 mm to 50 mm
- ◆ Working temperature: -325°F to 1000°F (-198°C to 537°C)
- ◆ Pickled, or bright annealed or precision cold worked followed by bright annealing, machined finished external surface
- ◆ Marked with brand, material grade, standard, specification and heat number
- ◆ Standard length: 40, 80, 10 ft, 20 ft, 1 m, 2 m, 3 m and 6 m  
Customized length as per customer requirement is also available

### BA Series

- ◆ Material: 316L
- ◆ Sizes: 1/4" to 2 1/2" and 6A to 50A
- ◆ Specially rolled and bright annealed, metallic inner surface finish of Ra 20 µin. (0.51 µm) max.
- ◆ Tubing ends are capped and tubing is packed individually in a single polyethylene bag
- ◆ Tubing body is marked with brand, material grade, standard, specification, and heat number
- ◆ Standard length: 20 ft, 4 m and 6 m

### EP Series

- ◆ EP tube is electrolytically polished, internal surface roughness Ra ≤ 0.25 µm.
- ◆ Material: 316L
- ◆ Ultrasonically cleaned, washed, rinsed, purged with filtered hot Nitrogen and dried in clean room
- ◆ Tubing ends are capped, and tubing is packed individually in double polyethylene bags
- ◆ Packing bags are marked with brand, material grade and specification
- ◆ EP tube is electrolytically polished, internal surface roughness Ra ≤ 0.25 µm.

### TC Series

- ◆ Materials: 316/316L, enhanced-316/316L or 304/304L
- ◆ Sizes: 1/16" to 1/2" and 0.8 mm to 12 mm
- ◆ Working temperature: -325°F to 1000°F (-198°C to 537°C)
- ◆ Bright annealed with machined finished external surface
- ◆ Marked with brand, material grade, standard, specification and heat number